



TL3-W & TL3-R BLUETOOTH® INSTRUCTIONS

The TL3-W and TL3-R thermometer models are capable of transmitting temperature data via wireless Bluetooth to supported Windows, Android and IOS devices.

Notes:

- For best signal it is recommended to orient the display window of the TL3 facing the direction of the receiving device.
- Bluetooth frequencies do not penetrate obstructions (walls, equipment, etc.) very well and it is recommended to use line of sight if possible between the TL3 and receiving device.
- The effective transmission range of the TL3 is dependent on many factors such as obstructions, wireless interference and the quality of the receiver's antenna.
- The receiving device requires a Bluetooth adaptor that supports Bluetooth Low Energy 4.0 or newer. It may be necessary to use an auxiliary USB Bluetooth receiver/dongle.

Windows Installation:

Download the Bluetooth installer package from:

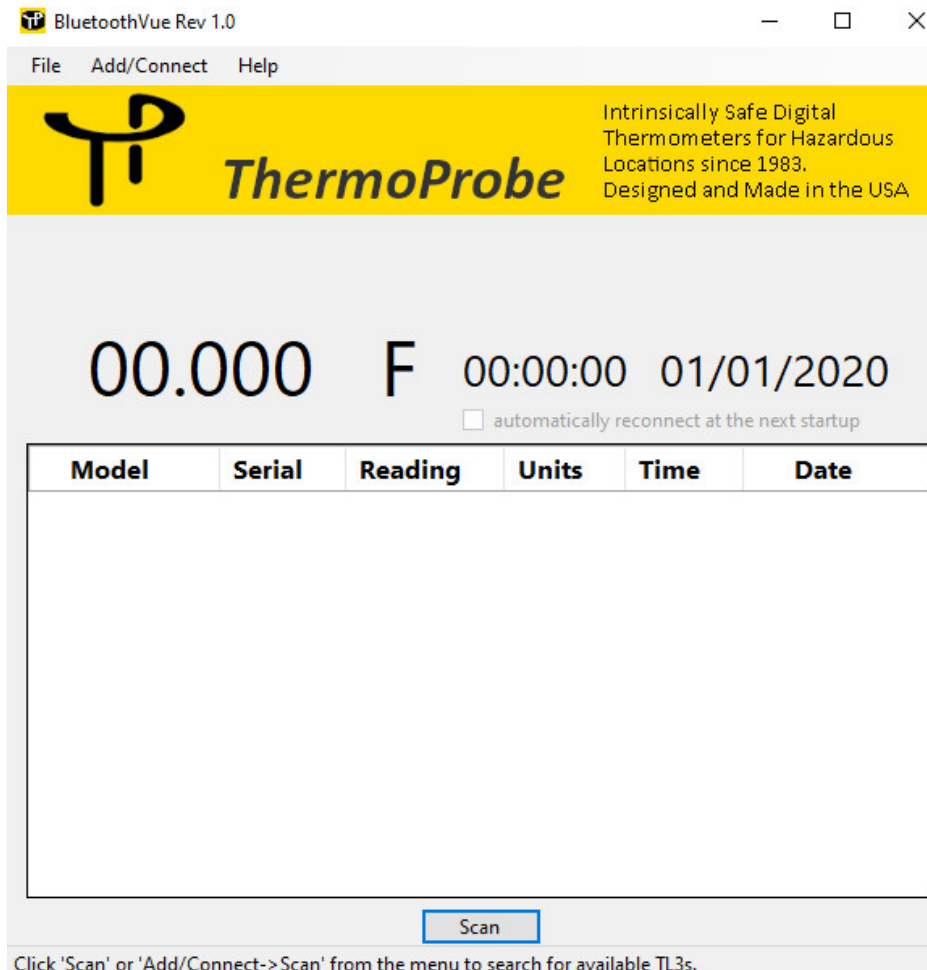
<https://www.thermoprobe.net/product-documentation-software>

Once downloaded, browse to the downloaded folder and run the file named setup.exe. Please follow all the prompts until the installation is complete. (Note: An internet connection is required to download files as part of the installation process.) The BluetoothVue application will install in the ThermoProbe, Inc. folder under all Apps and create a desktop icon.

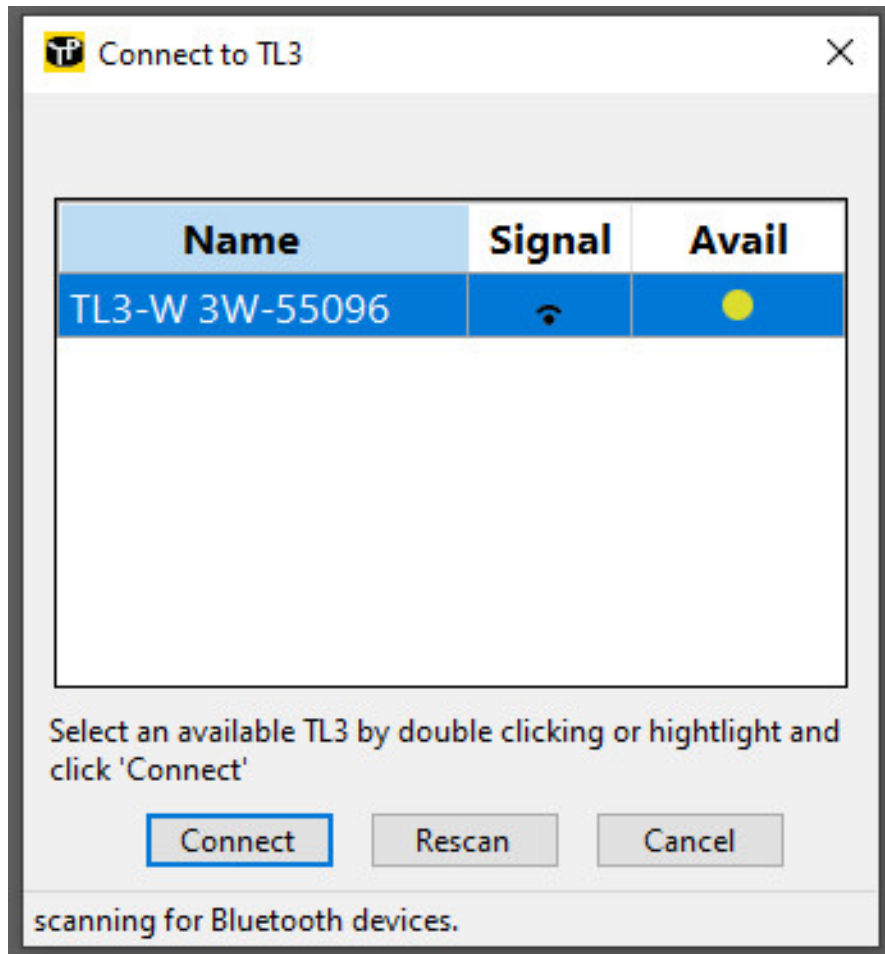
Make certain your Bluetooth is enabled in Windows Settings and launch the BluetoothVue Windows application using the desktop icon.

It is recommended to disable the Sleep or Hibernation mode in Windows settings if planning on using the logging feature for extended periods.

Turn on the TL3W or TL3R and use the advance button to find and select 'Strt_Bt' to begin Bluetooth transmission. (See TL3 user instructions) Note: The unit will remain on continuously while Bluetooth is enabled. The TL3 will return to the previously selected auto-off mode when Bluetooth is turned off.



From the BluetoothVue main window select the 'SCAN' button to open the Connection window. The active TL3 should appear in the connection window.



If the TL3 does not appear please make certain that TL3 Bluetooth has been enabled and Windows Bluetooth is working. Note: It is not necessary to pair the TL3 to Windows before using the software.

Select the TL3 from the Connection screen and click 'Connect'. The software will attempt a connection to the TL3. It may take more than one attempt to connect. Once the connection is made, the scan window will close to the main window and start displaying data.

Current Temperature

Unit Serial Number

TL3-W 3W-55096

74.741 F 12:52:26 06/08/2021

automatically reconnect at the next startup

Model	Serial	Reading	Units	Time	Date
TL3-W	3W-55096	74.7421	F	12:52:19	06/08/2021
TL3-W	3W-55096	74.7430	F	12:52:20	06/08/2021
TL3-W	3W-55096	74.7412	F	12:52:21	06/08/2021
TL3-W	3W-55096	74.7379	F	12:52:22	06/08/2021
TL3-W	3W-55096	74.7384	F	12:52:23	06/08/2021
TL3-W	3W-55096	74.7412	F	12:52:24	06/08/2021
TL3-W	3W-55096	74.7403	F	12:52:25	06/08/2021
TL3-W	3W-55096	74.7412	F	12:52:26	06/08/2021

Disconnect

Connected to TL3-W 3W-55096

A checkbox is included in case the user wants the software to automatically reconnect to the same TL3 unit next time the software is launched.

Note: If connecting to a different TL3 it may be necessary to cancel the scan and disable the auto-connect feature.

The screen will display the TL3's current temperature refreshed once per second. The 'Disconnect' button will stop the logging and end the session. Completed sessions will automatically create a .csv file that can be opened using Microsoft Excel, Notepad or other applications. These files are saved to the default Windows 'Documents' directory. A different directory can be selected using by selecting File -> New Dir.